

# Analysis of Palm Oil Industry Liquid Waste Management at PT. Citra Putra Kebun Asri in South Kalimantan Province

Surya Eka Putra<sup>1</sup>, Eri Barlian<sup>1</sup>, Nurhasan Syah<sup>1</sup>, Iswandi Umar<sup>1</sup>, Indang Dewata<sup>1\*</sup>

<sup>1</sup>Environmental Science Study Program, Graduate School, Universitas Negeri Padang, Padang, Indonesia.

Received: July 25, 2023

Revised: September 12, 2023

Accepted: September 25, 2023

Published: September 30, 2023

Corresponding Author:

Indang Dewata

[indangdewata@fmipa.unp.ac.id](mailto:indangdewata@fmipa.unp.ac.id)

DOI: [10.29303/jppipa.v9i9.5101](https://doi.org/10.29303/jppipa.v9i9.5101)

© 2023 The Authors. This open access article is distributed under a (CC-BY License)



**Abstract:** Oil palm plantations are currently experiencing quite rapid growth; this has resulted in a large number of oil palm fruit processing industries palm oil (crude palm oil) and palm kernel (palm kernel). The more oil palm fruit that is processed, the more liquid waste it produces. Liquid waste generated during the production process can harm the environment because of the high organic matter contained therein. The purpose of this study was to analyze the management of palm oil industrial wastewater at PT Citra Putra Kebun Asri. The method used in this study is an exploratory method and the collection and testing of data is done by graph sampling. The results of the analysis contained in the palm oil industrial wastewater, namely the pH content ranges from 4-8.5. The content of BOD and COD in the first pool had quite high levels, this was due to (human error) during testing, factory measuring instruments that had not been calibrated and inaccurate sampling by factory staff. While the BOD and COD in the application pond have values that are in accordance with the liquid waste quality standards with BOD values below 100 mg/L and COD values below 250 mg/L.

**Keywords:** Analysis; Liquid waste; Palm oil

## Introduction

Palm oil (*Elaeis guineensis* Jacq) is a plantation plant that has an important role in agriculture in Indonesia (Ariyanti et al., 2023). Oil palm plants are one of the plantation commodities that have high economic value, this is what makes it one of the mainstays of the Indonesian state in the agricultural-based industrial development sector (agro-industry) (Daudi et al., 2021). In Indonesia, the oil palm plant has experienced very rapid and significant development and growth in recent years (Hastuti & Titiaryanti, 2022; Akli et al., 2022).

Oil palm plants also provide a fairly high income to farmers when compared to other plantation crops, this is what makes the area of oil palm plantations continue to increase (Hasibuan et al., 2023). The increase in oil palm plantation area was also offset by an increase in oil palm fruit production (Gultom et al., 2023). The rapid increase in palm fruit production has resulted in an increase in the establishment of palm oil mills (Wiharja et al., 2023).

Oil palm fruit produced from oil palm plantations which are commonly called Palm Fruit Bunches (FFB) are sent to palm oil mills for processing. Palm oil mills produce palm oil (crude palm oil) and palm kernel (palm kernel) (Fackrurrozi et al., 2019). In addition to producing palm oil and palm kernel, oil palm fruit also generates waste (Gusrawaldi et al., 2020). Waste is everything that is generated during the production process (Syamsuddin & Rivai, 2023). Palm oil waste is derived from the remaining results of the cultivation of oil palm plants, the palm processing industry and the processing of palm kernel oil. Of course, this process produces a lot of waste (Pravei & Widayar, 2022). In general, waste from palm oil mills consists of three types, namely liquid, solid and gas waste. Palm oil mill liquid waste comes from the steaming process unit, clarification process and exhaust from hydrocyclones. At the time of steaming large quantities of hot water, saturated steam and superheated steam are used, and most of it will turn into waste (Tan et al., 2019).

Liquid waste from the processing of palm oil factories is one of the wastes that has a considerable

## How to Cite:

Putra, S.E., Barlian, E., Syah, N., Umar, I., & Dewata, I. (2023). Analysis of Palm Oil Industry Liquid Waste Management at PT. Citra Putra Kebun Asri in South Kalimantan Province. *Jurnal Penelitian Pendidikan IPA*, 9(9), 6854–6860. <https://doi.org/10.29303/jppipa.v9i9.5101>

influence because it contains many contaminants that can harm the environmental ecosystem (Nabilah et al., 2022). In addition, liquid waste from palm oil mills also contains Biological Oxygen Demand (BOD) and Chemical Oxygen Demand (COD) (Antoni et al., 2021). While the palm oil mill solid waste is grouped into two, namely waste originating from the processing and those originating from the liquid waste treatment base. Solid waste originating from the processing process is in the form of Oil Palm Empty Bunches (EFB), shells, fiber, sludge, and oilcake (Arita et al., 2020).

Palm liquid waste that is not used will be disposed of into the environment, but must be processed first so as not to endanger the environment (Nuryanti et al., 2019). Because it is dangerous, palm oil mill effluent must be treated before being discharged into the environment. Wastewater management can be accommodated and processed in several stages (Syafrinal et al., 2023). Oil palm liquid waste is processed and stored in holding ponds consisting of Fat pit pond, Deoiling pond, Acidification pond, Primary anaerobic pond, and Land application (Sitorus & Mardina, 2020). The process of liquid waste management is very important to do and must comply with existing regulations (Sofiyanti et al., 2023).

Liquid waste management must be in accordance with the AMDAL (Environmental Impact Analysis) document contained in the approved (Environmental Management Plan) and (Environmental Monitoring Plan). AMDAL is an instrument that must be obtained and must be in accordance with waste quality standards in order to anticipate environmental damage (Sukananda & Nugraha, 2020).

Quality standards are limits or levels of living things, substances or energy or other components that exist or must exist and pollution elements that are tolerated in accordance with their designation (Sholihah et al., 2019). The quality standard for PKS liquid waste for business and palm oil industry activities refers to the AMDAL and Regulation of the Minister of Environment of the Republic of Indonesia No. 5 of 2014 concerning PKS waste quality standards is shown in Table 1.

**Table 1.** Liquid Waste Quality Standards

Parameter	Units	Standard Quality
BOD	mg/L	100
COD	mg/L	350
TSS	mg/L	250
Oil and fat	mg/L	25
Nitrogen (N)	mg/L	50
pH	-	6 - 9

Source: Regulation of the Minister of Environment of the Republic of Indonesia Number 5 of 2014

Based on the background above, the authors are interested in analyzing the management of liquid waste in the palm oil industry. Where TSS, BOD, COD and pH are the parameters to be tested. This research is located at PT Citra Putra Kebun Asri (PT. CPKA) located in Tanah Laut Regency, South Kalimantan Province.

## Method

### Preliminary Observation

The survey is the first step before conducting research with the aim of the researcher being able to get an overview of the location that will be used as the research location and collecting secondary data.

### Implementation Method

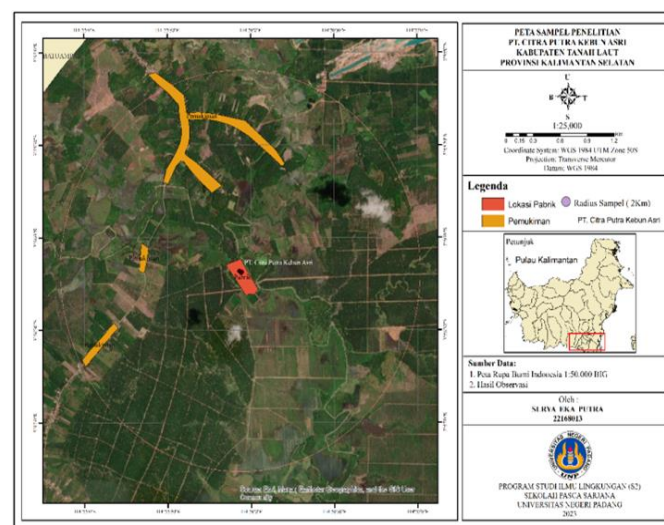
Observation of liquid waste is carried out by the exploratory method. Namely making observations along the path of the Waste Pool to be analysed (Tang et al., 2020). Collection and testing in this study were carried out from January to December 2022. Data collection was carried out by means of grab sampling. The samples taken in this study were POM waste from the last pool or application pool.

### Identification

Identification of substances contained in liquid waste using research results and standard laboratory data results of PT. Citra Putra Kebun Asri, to find out and explain the level of Quality Standards for palm oil liquid waste that meet the requirements.

## Result and Discussion

### Research Sites



**Figure 1.** Research location map

Tanah Laut Regency is one of the regencies in South Kalimantan Province, the area of oil palm plantations per 2021 in Tanah Laut Regency based on data from the Plantation and Livestock Service Office of South Kalimantan Province in 2022 is 73,665 Ha with 7 palm oil mills, one of which is Factory PT Citra Putra Kebun Asri (Diskominfo Tala, 2023).

Factory PT. Citra Putra Kebun Asri began operating in 2013 with a FFB processing capacity of 60 tonnes/hour. This factory uses horizontal boiling using a 5 ton capacity truck. The factory can process 1,200 tons of FFB per day and produce 600 - 720 tons of liquid waste per day. Waste treatment is carried out in 7 units of waste ponds near the factory.

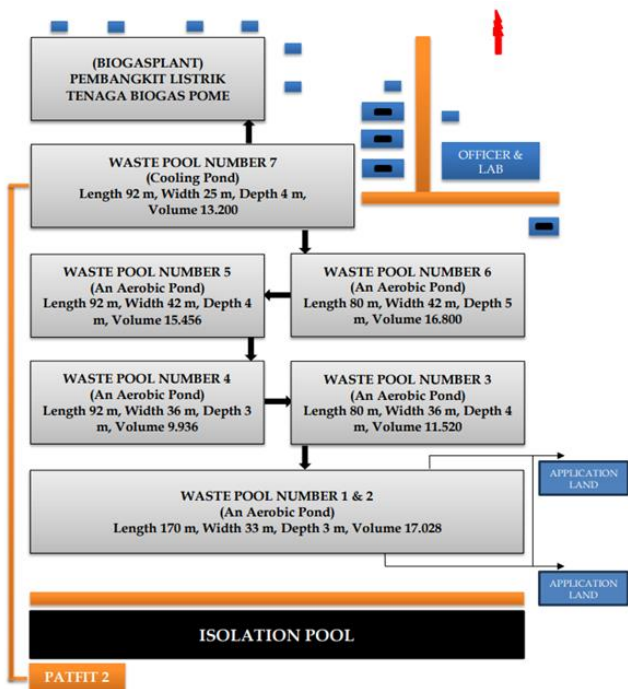


Figure 2. Waste Pool Layout PT. Citra Putra Kebun Asri

*Pool pH 1 and Application Pool*

As a water quality parameter, pH plays a very important role because pH is an indicator of the type and reaction rate of several parameters in water (Zulfahmi et al., 2022). From the results of analysis of pH data obtained from July 2022 to July 2023 in the first pool and application ponds it ranges from 4-8.5. In July and October, the pH value decreased, hal this can happen because the waste treatment process is less consistent and less stable. It could also be caused by weather factors. Putri et al., (2020) said that, the increase and decrease in pH is caused by carbon dioxide dissolved in water will experience an equilibrium reaction that produces OH ions that cause an increase in the pH value. However, the average pH value is already at the environmental quality standard threshold, namely pH 6 - 9. In Figure 3, it can be seen that the pH value in the

gardening pond and application pond has been relatively constant for 12 months.

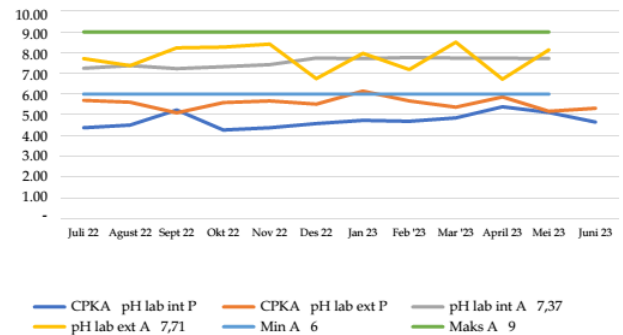


Figure 3. pH test results in pond 1 and application

*Biological Oxygen Demands (BOD) Pool 1 and Application Pool*

Based on Figure 4, the BOD level in the first pool has a very high value every month. October experienced the highest increase in BOD levels, this can happendue to factory staff (human error) when carrying out tests, factory measuring instruments that have not been calibrated and sampling by factory staff who are not quite right. Whereas in the application pool the BOD level is below the maximum threshold and has decreased,a decrease in the concentration of BOD indicates that the organic matter contained in wastewater is mostly biodegradable (biologically degradable) (Mandasari et al., 2021).



Figure 4. BOD test results in pool 1 and application

*Chemical Oxygen Demand (COD) Pool 1 and Apication Pool*

The COD parameter is the amount of oxygen required to oxidize materials that can be oxidized in wastewater by oxidizing compounds as a determinant of organic matter (Zulfahmi et al., 2022). The COD value in the first pool was above the minimum threshold of 350 mg/L, this could happen because the waste treatment process is less consistent and less stable. It can also be caused by weather factors and factory staff (human error) when carrying out tests, factory measuring instruments that have not been calibrated and sampling by factory staff who are not quite right. The COD level



in the application pool is below the maximum limit, this could have happened because the organic compounds in the application pool had decreased, so that the COD level was below the applicable regulatory threshold, namely 350 (Masthura et al., 2022).



Figure 5. COD test results in pond 1 and application

*Total Suspended Solids (TSS) Pool 1 and Application Pool*

TSS are suspended substances in the water (Zulfahmi et al., 2023). From the results of the analysis, the TSS substance contained in the first pool was very high, this happened because when the factory staff took the sample it was not quite right and when the test was carried out independently, the tools used were not calibrated first, so that the TSS levels were obtained. exceeds the threshold for the quality of liquid waste (Viena et al., 2023). Meanwhile, the application pool has a total suspended solid (TSS) value that is in accordance

with the threshold. However, in May there was an increase, this could happen because the waste treatment process is less consistent and less stable and can also be caused by weather factors. High TSS has an adverse effect on water quality and the environment, because it causes turbidity, so sunlight cannot enter the water and makes organisms unable to photosynthesize (Sisnayati et al., 2021).

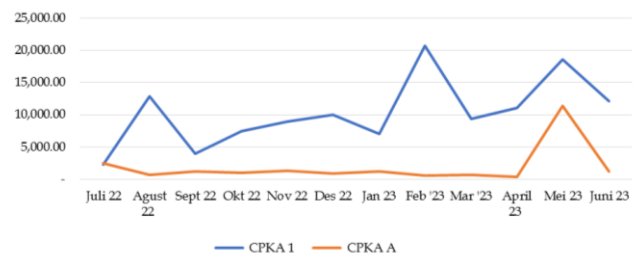


Figure 6. TSS test results in pond 1 and application

*Frequency Distribution and Normality Test of First Pond and Application Pool PT Citra Putra Kebun Asri*

In the frequency distribution and numerical distribution test (normality), parameter data for the first pond wastewater and the application pond PT Citra Putra Kebun Asri done with the SPSS application. Because the data is less than 50 ( $n < 50$ ), the analytical method uses Shapiro-Wilk, where  $p > 0.05$  is considered normally distributed data (Dahlan, 2015).

Table 2. Frequency Distribution and First Pond Normality Test

Parameter	Min	Max	Means	Normality test	Data Distribution
phint	4.270	5.390	4.733	$p=0.428$	Normal
phext	5.100	6.150	5.560	$p=0.876$	Normal
BOD	11.95	48.696	25.131	$p=0.307$	Normal
COD	25.92	10.660	70.430	$p=0.069$	Normal
TSS	2,337	20.700	10.386	$p=0.666$	Normal

Source: Processed data results

Based on table 2, it was found that all parameters of internal pH (pHint), external pH (pHext), BOD, COD and TSS data were normally distributed with a significance value of  $p > 0.05$ . This shows that the liquid

waste that enters the processing site has consistent parameters. This means that the production process is running well.

Table 3. Frequency Distribution and Application Pool Normality Test

Parameters	Min	Max	Means	Test Normality	Data Distribution
phint	7.23	7.77	7.531	$p=0.014$	Abnormal
phext	6.72	8.50	7.746	$p=0.244$	Normal
BOD	28.200	3.440	10.450	$p=0.044$	Abnormal
COD	14.552	15.524	4.879	$p=0.000$	Abnormal
TSS	43.33	11.350	19.390	$p=0.000$	Abnormal

Source: Processed data results

Based on table 3, it can be seen that only the pHext parameter is normally distributed with a significance  $p = 0.244$  ( $p > 0.05$ ). For the parameters pHint, BOD, COD and TSS the data were not normally distributed with a

significance  $p < 0.05$ . This can happen because the waste treatment process is less consistent and less stable. It could also be caused by weather factors.

For pH<sub>Hint</sub> and pH<sub>Ext</sub>, the Wilcoxon Ranks Test was carried out because one of the data was not normally distributed. The results of the Wilcoxon Ranks Test showed that there was no significant difference in the average pH between pH<sub>Hint</sub> and pH<sub>Ext</sub> in the PT. Image of Putra Kebun Asri with significance  $p = 0.450$  ( $p > 0.05$ ). This shows that the process of sampling and analysis of the two samples is close, even though government laboratories already have accreditation and checks using SNI standards.

*Analysis of Liquid Waste Treatment PT. Image of Putra Kebun Asri*

To see the processing of liquid waste PT Citra Putra Kebun Asri has been done well, then a statistical analysis of the parameters of the first pool with the application pool is carried out. For pairs of normally distributed data, an unpaired T-test was performed. For pairs of data that are not normally distributed, a transformation test is performed first. If the data is still not normally distributed, then proceed with the numerical mean test of 2 independent groups, with one group of data not normally distributed (Mann-Whitney Test).

**Table 4.** First Pool and Application Pool Different Test Data

	Parameter	Mann-Whitney Test	T-Test
phint	First Pool	$p = 0.000$	
	Application Pool		
phext	First Pool	$p = 0.000$	
	Application Pool		
BOD	First Pool	$p = 0.000$	
	Application Pool		
COD	First Pool	$p = 0.000$	
	Application Pool		
TSS	First Pool	$p = 0.000$	
	Application Pool		

Source: Processed data results

From the table above, the pH<sub>Hint</sub> and pH<sub>Ext</sub> values were obtained using a pairwise different test (T-Test) because the samples were taken from the same place but the checks were carried out at the factory laboratory (pH<sub>Hint</sub>) and at the government laboratory (pH<sub>Ext</sub>). Significance results obtained  $p = 0.000$  ( $p < 0.05$ ). This value indicates that there is a significant difference in average between pH<sub>Hint</sub> and pH<sub>Ext</sub>. The government laboratory has been accredited so that it can be said that the results are more accurate than internal checks. This discrepancy can occur due to several things, such as: The carelessness of factory staff (human error) when carrying out tests, factory measuring instruments that have not been calibrated and sampling by factory staff who are not quite right.

*Analysis of the values of pH, BOD and COD of Application Ponds compared with standard values for PT Citra Putra Kebun Asri*

Data from table 5 shows that all pH<sub>Hint</sub> and pH<sub>Ext</sub> parameters are in accordance with the standard, which is between 6-9. The BOD parameter according to the standard is only 16.7%, while 83.3% of the parameters are below the AMDAL standard (standard 2000 - 5000 mg/l). The more BOD is below standard, the nutrient content of the waste that is applied to the garden becomes less.

**Table 5.** Application Pool Parameters based on Standard Parameters of PT Citra Putra Kebun Asri

Parameter	Amount of data	As per standards (%)	Subpar (%)	Top standards
phint	12	100	-	-
phext	12	100	-	-
BOD	12	16.7	83.3	-

Source: Processed data results

To anticipate this in the future, circulation between waste ponds must be carried out properly so that all parameters can be in accordance with predetermined standards. Supervision must be carried out strictly. It is also planned to purchase tools for checking BOD so that the frequency of checking can be carried out more frequently. Don't just rely on checking once a month from a government laboratory.

**Conclusion**

The conclusion of this study is the analysis results found in the palm oil industry wastewater, namely the pH content ranges from 4-8.5. While the BOD and COD in the application pond have values that are in accordance with the liquid waste quality standards with BOD values below 100 mg/L and COD values below 250 mg/L.

**Acknowledgments**

During the research, the author received a lot of support, guidance, direction and input from various parties. For this reason, on this occasion the author would like to thank the lecturer in the Environmental Science Study Program, Postgraduate School, Padang State University. To the ladies and gentlemen of PT Citra Putra Kebun Asri who have given the opportunity and permission to carry out the research.

**Auhor Contribution**

S.E.P: original draft preparation, results, discussion, methodology, conclusions; I.D, E.B, N.S, I.U: analysis, review, proofreading and editing.

**Funding**

This research did not receive external funding.

**Conflicts of Interest**

The authors declare that there is no conflict of interest regarding the publication of this paper.

**References**

- Akli, K., Aprila, Y., Akbar, A., & Senjawati, M. I. (2022). Pengaruh Pemasangan Fine Bubble Diffuser terhadap Nilai COD dan BOD Limbah Cair Palm Oil Mill Effluent. *REACTOR: Journal of Research on Chemistry and Engineering*, 3(1), 36. <https://doi.org/10.52759/reactor.v3i1.55>
- Antoni, A., Siregar, Y. I., & Suwondo, S. (2021). Strategi pemanfaatan Palm Oil Mill Effluent (POME) sebagai sumber energi berkelanjutan di pabrik kelapa sawit PT. Meridan Sejati Surya Plantation Kabupaten Siak. *Jurnal Zona*, 4(2), 50-59. <https://doi.org/10.52364/jz.v4i2.18>
- Ariyanti, M., Rosniawaty, S., & Nadiyah, F. (2023). Pengaruh Aplikasi Bacillus sp . dan Kompos Tandan Kosong Kelapa Sawit terhadap Pertumbuhan Bibit Kelapa Sawit. *Jurnal Agrikultura*, 34(2), 306-314. <https://doi.org/10.24198/agrikultura.v34i2.43170>
- Arita, S., Rifqi, M., Nugoro, T., Agustian, T. E., & Hadiah, F. (2020). Manufacture of biodiesel from palm oil effluent with various sulfuric acid catalysts in the esterification process. *Jurnal Teknik Kimia*, 1(26), 1-11. <https://doi.org/10.36706/jtk.v26i1.89>
- Daudi, K., Langsa, M. H., & Sirampun, A. D. 2021. The Effect of Using Palm Oil Mill Effluent on Water Quality in Palm Oil Land PT. Pmp in Maybrat District. *Jurnal Natural*, 17(2), 85-96. Retrieved from <http://repository.unipa.ac.id:8080/xmlui/handle/123456789/1636>
- Dahlan, M. S. (2015). *Statistik Untuk Kedokteran dan Kesehatan: Deskriptif, Bivariat Dan Multivariat (6th Ed)*. Penerbit Salemba.
- Diskominfo Tala. (2023). *Satu Data Tanah Laut*. Retrieved from <https://diskominfo.tanahlautkab.go.id/>
- Fackrurrozi., Junaedi, A., & Derajat Matra, D. (2019). Manajemen Pemanenan Kelapa Sawit (*Elaeis guineensis* Jacq.) di Kebun Rambutan, Serdang Bedagai, Sumatera Utara. *Buletin Agrohorti*, 7(3), 319-328. <https://doi.org/10.29244/agrob.v7i3.30259>
- Gusrawaldi, M., Parinduri, L., & Suliawati. (2020). Perencanaan Pemanfaatan Limbah Cair Untuk Pembangkit Listrik Pabrik Kelapa Sawit. *Journal of Electrical Technology*, 5(1), 38-42. Retrieved from <https://jurnal.uisu.ac.id/index.php/jet/article/view/2567>
- Gultom, K., Ramadhani, S., Herdinda, S., & Hasibuan, A. (2023). Analisis Siste, Pengolahan Kelapa Sawit dan Pemanfaatan Limbah Kelapa Sawit di PT.Perkebunan Nusantara IV Unit Dolok Ilir. *Jurnal Cross-border*, 6(2), 1167-1174. Retrieved from <https://journal.iaisambas.ac.id/index.php/Cross-Border/article/view/2145>
- Hastuti, P. B., & Titiaryanti, N. M. (2022). Respon Pertumbuhan Bibit Kelapa Sawit Di Pre Nursery Dengan Berbagai Konsentrasi Eco Enzyme Dan Dosis Npk Response the Growth of Oil Palm Seedlings in Pre Nursery With Various Eco Enzyme Concentration and Npk Dosage. *Jurnal Pertanian Agros*, 24(2), 598-606. Retrieved from <https://www.e-journal.janabadra.ac.id/index.php/JA/article/view/1953>
- Hasibuan, A., Nasution, Q. F. N., Lubis, A. M. P., Harahap, A. A., Nasution, S. P. 2020. Pemanfaatan Limbah Kelapa Sawit (Tandan Kosong Kelapa Sawit) Sebagai Pupuk Organik Yang Ramah Lingkungan di Kabupaten Labuhan Batu Utara. *ZAHRA:Journal of Health and Medical Research*, 3(3), 312-319. Retrieved from <https://adisampublisher.org/index.php/aisha/article/view/433>
- Hidayah, N., & Wusko, I. U. 2020. Characterization and Analysis of Oil Palm Empty Fruit Bunch (OPEFB) Waste of PT Kharisma Alam Persada South Borneo. *Traditional Medicine Journal*, 25(3), 154-160. <https://doi.org/10.22146/mot.52715>
- Mandasari, O., Mardina, V., & Fadhlani, F. (2021). Pengolahan Limbah Cair Domestik Pada PMKS PT Sisirau di Kabupaten Aceh Tamiang. *Jurnal Enviroscience*, 5(1), 41. <https://doi.org/10.30736/5ijev.v5iss1.262>
- Masthura, M., Daulay, A. H., & Daulay, L. (2022). Penurunan Kandungan Bod Dan Cod Limbah Cair Kelapa Sawit Menggunakan Metode Elektrokoagulasi. *JISTech (Journal of Islamic Science and Technology)*, 6(2), 1-9. <https://doi.org/10.30829/jistech.v6i2.10014>
- Nabilah, Y., Putri, T.N., Widiasta, I.N., TitO, A., Adyaksa, M.N. (2022). Performance Evaluation of Wastewater Treatment Plant (WWTP) at PT. Rohul Sawit Industri. *Jurnal Teknik Kimia USU*, 11(1), 95-101. <https://doi.org/10.32734/jtk.v11i2.8969>
- Nuryanti, R., Emilia Agustina, T., & Indah Sari, T. (2019). The Utilization of Palm Oil Mill Effluent For Renewable Energy. *Indonesian Journal of Fundamental and Applied Chemistry*, 4(3), 116-121. <https://doi.org/10.24845/ijfac.v4.i3.116>
- Preavia, M.F., Widayat. 2022. Analisis Pemanfaatan Limbah Tandan Kosong Kelapa Sawit Sebagai Cofiring pada PLTU Batubara. *JEBT: Jurnal Energi Baru & Terbarukan*, 3(1), 28-37.

- <https://doi.org/10.14710/jebt.2022.13367>
- Putri, I. A. H., Lastriyanto, A., & Sulianto, A. A., (2020). Effectiveness of Tanning Leather Tanning Liquid Waste Treatment Against BOD, COD, DO, pH, Sulfide, and Chrome Levels With Deep Aeration. *Journal of Agricultural and Biosystem Engineering Research*, 1(1), 35-45. Retrieved from <http://jos.unsoed.ac.id/index.php/jaber/article/view/3127>
- Sholihah, Q., Prillia, D. N. A., Hanani, N., Kuncoro, W., Juono, P. T., & Tama, I. P. (2019). Analysis of water quality based on BOD and COD levels in Unisma hospital. *International Journal of Innovation, Creativity and Change*, 7(9), 42-48. <https://doi.org/10.36084/jpt.v11i1.486>
- Syafrinal, Samah, S. D., Putri, M., Fatmawati., & Januarti, R. 2023. Penentuan pH, Chemical Oxygen Demand dan Total Suspended Solid Pada Kolam Limbah Cair Pabrik Kelapa Sawit. *SAINTI: Majalah Ilmiah Teknologi Industri*, 20(1), 18-25. <http://dx.doi.org/10.52759/sainti.v20i1.198>
- Syamsuddin, S., & Rivai, A. M. N. 2023. Gambaran Pengolahan Limbah Cair Kelapa Sawit di PTPerkebunan Nusantara XIV Kabupaten Luwu Timur. *Jurnal Sulolipul:Media Komunikasi Sivitas Akademika dan Masyarakat*, 23(1), 147-155. <https://doi.org/10.32382/sulolipu.v23i1.3165>
- Sisnayati, S., Dewi, D. S., Apriani, R., & Faizal, M. (2021). Penurunan BOD, TSS, minyak dan lemak pada limbah cair pabrik kelapa sawit menggunakan proses aerasi plat berlubang Reducing BOD, TSS, oil and greace in palm oil mill effluent by using perforated plate aeration process. *Jurnal Teknik Kimia*, 27(2), 38-45. <https://doi.org/10.36706/jtk.v27i2.559>
- Sitorus, Y. R., & Mardina, V. (2020). Karakteristik Kimia dari Pengolahan Limbah Cair PTPN Y, Sumatera Utara. *Jurnal Envoscience*, 4(2), 58. <https://doi.org/10.30736/4ijev.v4iss2.197>
- Sofianti., Ardiansyah., Susaldi. (2023). Analisis Kualitas BOD , COD , Dan TSS Dalam Pengelolaan Limbah Cair Setelah Proses Koagulasi Dan Flokulasi Pada Instalasi Pengolahan Air Limbah ( Studi Pada Industri Kosmetik X Di Kota Depok ) Tahun 2022. *Student Scientific Creativity Journal (SSCJ)*, 1(3), 81-92. <https://doi.org/10.55606/sscj-amik.v1i3.1334>
- Sukananda, S., & Nugraha, D. A. (2020). Urgensi Penerapan Analisis Dampak Lingkungan (AMDAL) sebagai Kontrol Dampak terhadap Lingkungan di Indonesia. *Jurnal Penegakan Hukum Dan Keadilan*, 1(2), 119-137. <https://doi.org/10.18196/jphk.1207>
- Tan, I. A. W., Jamali, N. S., & Ting, E. H. T. (2019). Phytoremediation of Palm Oil Mill Effluent (POME) Using Eichhornia crassipes. *Journal of Applied Science & Process Engineering*, 6(1), 340-354. <https://doi.org/10.33736/jaspe.1349.2019>
- Tang, P. L., Hong, W. L., Yue, C. S., & Harun, S. 2020. Palm oil mill effluent as the pretreatment solvent of oil palm empty fruit bunch fiber for fermentable sugars production. *Bioresource Technology*, 314, 1-8. <https://doi.org/10.1016/j.biortech.2020.123723>
- Viena, V., Bahagia, Nurlaini, & Juanda, R. (2023). Efektivitas Penurunan COD , BOD dan TSS Limbah Industri Sawit Menggunakan Koagulan Kimia dan Ekstrak Alami Pati Pelepah Sawit. *Jurnal Serambi Engineering*, 8(1), 4931-4939. <https://doi.org/10.32672/jse.v8i1.5662>
- Wiharja, M. A., Rochmiyati, S. S., & Andayani, N. 2016. Pengaruh Aplikasi Limbah Cair Pabrik Kelapa Sawit dan Tandan Kosong Kelapa Sawit Terhadap Produksi Kelapa Sawit. *Jurnal Agromast*, 1(2). Retrieved from <http://journal.instiperjogja.ac.id/index.php/JAI/article/view/269>
- Zulfahmi, I., El Rahimi, S. A., Suherman, S. D., Almunawarah, A., Sardi, A., Helmi, K., ... & Rahman, M. M. (2023). Acute toxicity of palm oil mill effluent on zebrafish (*Danio rerio* Hamilton-Buchanan, 1822): Growth performance, behavioral responses and histopathological lesions. *Chemosphere*, 340, 139788. <https://doi.org/10.1016/j.chemosphere.2023.139788>